

Supplementary material

Lineage-specific proteins essential for endocytosis in trypanosomes

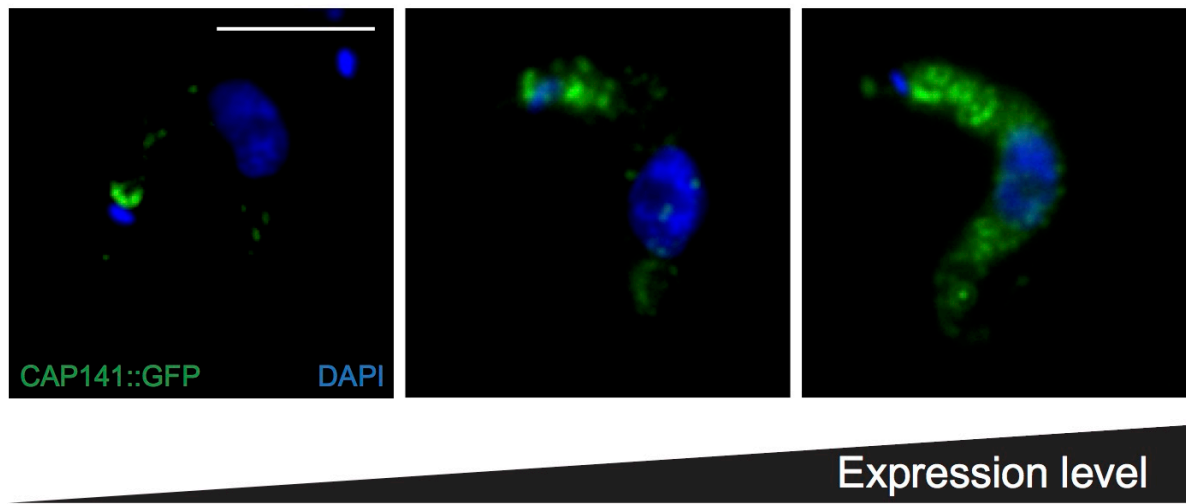
Paul T. Manna¹, Cordula Boehm¹, Samson O. Obado², Catarina Gadelha³, Andrej Sali⁴, Brian T. Chait², Michael P. Rout² and Mark C. Field^{1*}

¹Wellcome Trust Centre for Anti-Infectives Research, School of Life Sciences, University of Dundee, Dundee, Scotland, DD1 5EH, UK, ²The Rockefeller University, 1230 York Avenue, New York, NY 10021, USA, ³School of Life Sciences, University of Nottingham, Nottingham NG2 7UH and ⁴California Institute for Quantitative Biosciences, University of California, San Francisco, CA 94158, USA.

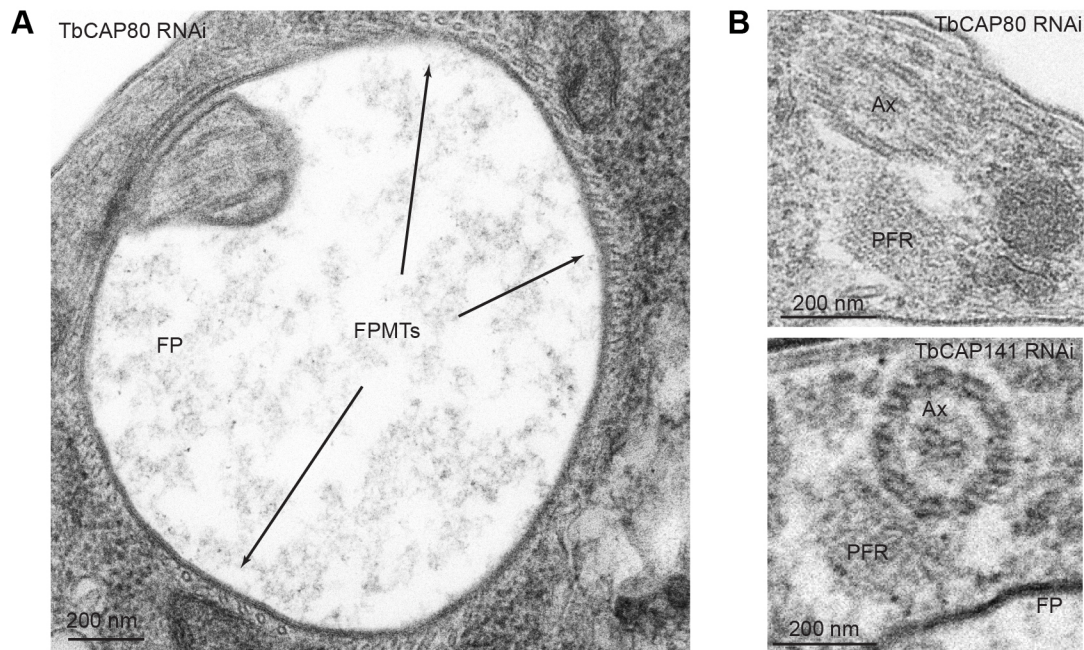
Supplemental table ST1. Peptide coverage, Log(e) confidence scores, and label-free quantitation for proteins identified in all affinity isolation experiments.

[Click here to Download Table S1](#)

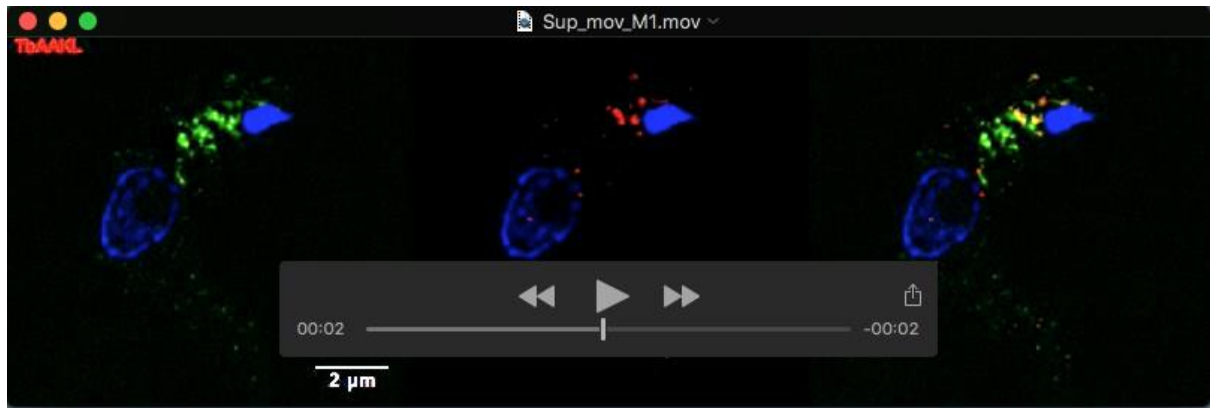
Supplementary figures



Supplemental Figure S1. Saturability of flagellar pocket localisation and mis-targeting of ectopically expressed CAP141 due to overexpression.



Supplemental Figure S2. (A) Microtubule invasion of the flagellar pocket region following TbCAP80 depletion. (B) Intracellular axoneme and paraflagellar rod material following TbCAP80 or TbCAP141 depletion. FP: flagellar pocket, FPMT: flagellar pocket microtubules, Ax: axoneme, PFR: paraflagellar rod.



Supplemental movie M1: 3D SIM reconstruction revealing co-localisation of clathrin heavy chain (green) and TbAAKL. The antibodies used were in house rabbit polyclonal anti-CHC followed by Alexa-488 anti rabbit and rat anti-HA (3f10 clone, Roche) followed by Alexa-568 anti-rat. DNA is shown in blue. Images were acquired on a Delta Vision OMX V3. Scale bar is 2 μ m.



Supplemental movie M2: 3D SIM reconstruction revealing co-localisation of clathrin heavy chain (green) and TbCAP80. The antibodies used were in house rabbit polyclonal anti-CHC followed by Alexa-488 anti rabbit and rat anti-HA (3f10 clone, Roche) followed by Alexa-568 anti-rat. DNA is shown in blue. Images were acquired on a Delta Vision OMX V3. Scale bar is 2μm.



Supplemental movie M3: 3D SIM reconstruction revealing co-localisation of clathrin heavy chain (green) and TbCAP141. The antibodies used were in house rabbit polyclonal anti-CHC followed by Alexa-488 anti rabbit and rat anti-HA (3f10 clone, Roche) followed by Alexa-568 anti-rat. DNA is shown in blue. Images were acquired on a Delta Vision OMX V3. Scale bar is 2μm.